



## **Moxa NPort® 5150A Setup Guide for TDAI-2170 or CD-2 Control**

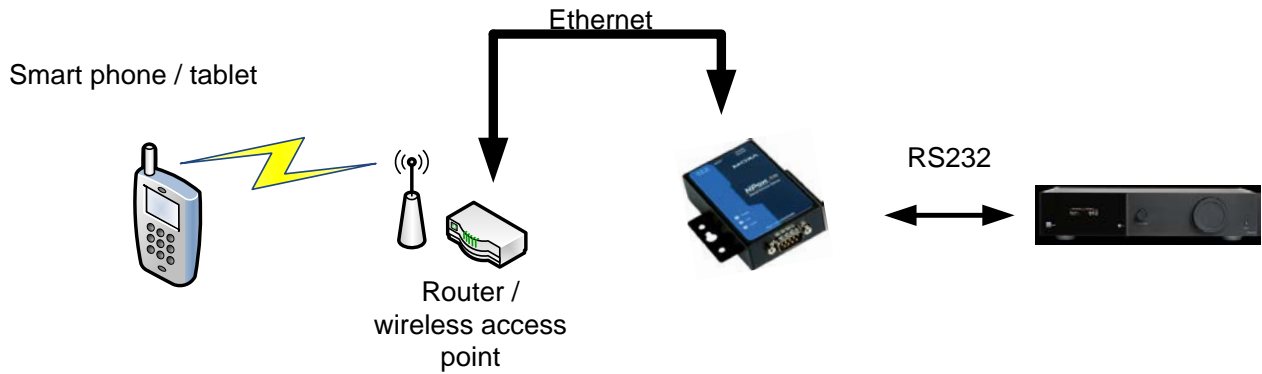
The Moxa NPort® 5150A device server is designed to make serial devices network-ready and to provide PC software with direct access to these devices from anywhere on the network. This device server enables control of the Lyngdorf Audio TDAI-2170 and/or CD-2 using the Lyngdorf Audio smart phone or tablet app.

This step-by-step guide will help you set up the Moxa NPort 5150A for app-enabled control of the TDAI-2170 or CD-2. Before beginning, please note:

- If you want to control *both* a TDAI-2170 *and* a CD-2, you will need two Moxa NPort 5150A units, or a dual RS232 output version like the Moxa NPort W2250A.
- This guide will help you set up the Moxa port server on the serial side to baud speed 115200, 8bit, 1 stop bit, no parity, no flow control; and on the Ethernet side to a Static IP and working in “Reverse Telnet” mode. You will then connect to the app and enable standby mode. Any serial server can be used if the unit supports “Reverse Telnet.”
- **Important:** technical questions beyond the scope of this document regarding Moxa will need to be directed to Moxa technical support. Visit [www.moxa.com](http://www.moxa.com) to learn more.

## Setup Guide

1. Connect the Moxa port server and TDAI-2170 as indicated on this diagram:



RS232 is an analog serial control interface for connecting to a device (example: can be found on stationary computers for connecting to printers).

The cable required for the connection is a RJ12/DB9 connector.

This connector can be purchased on [www.lyngdorf.com](http://www.lyngdorf.com)

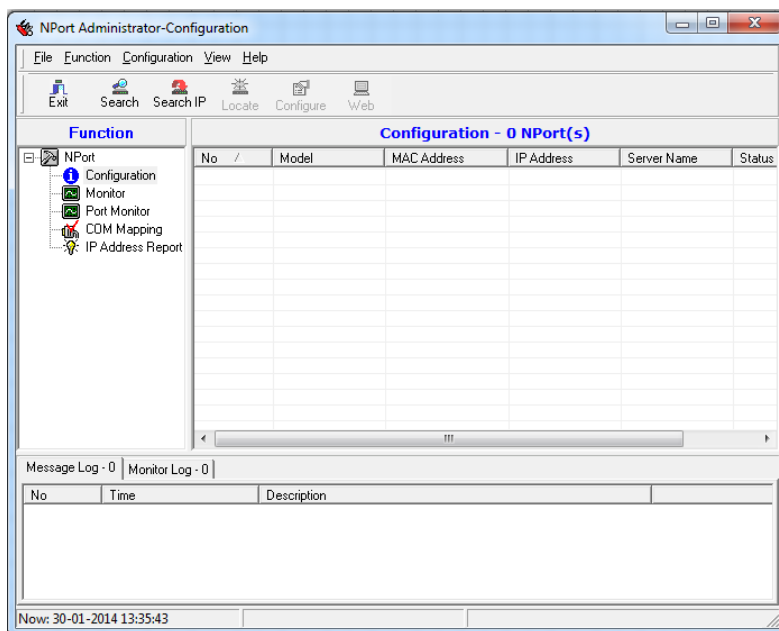
A detailed description of serial commands can

be found on the download page of [www.lyngdorf.com](http://www.lyngdorf.com).

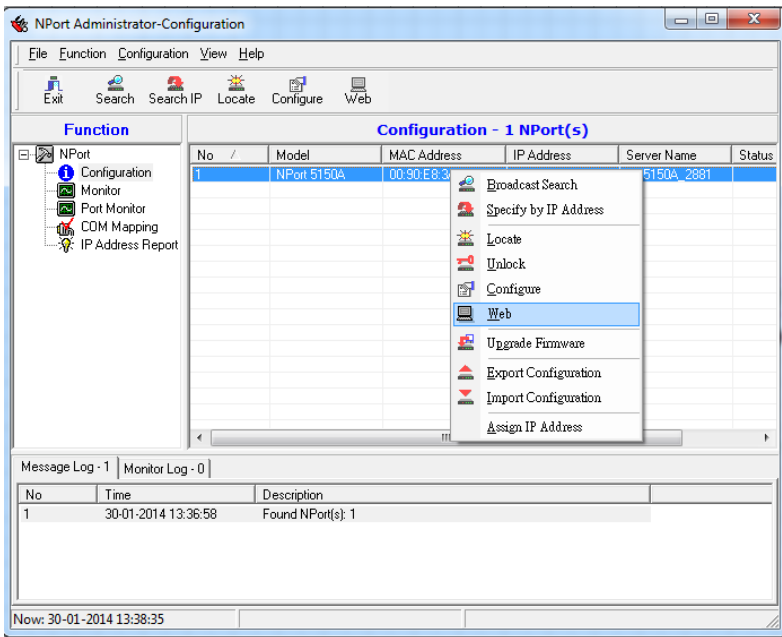


2. Follow the Moxa quick installation guide and install the NPort administration suite from the CD that came with the Moxa device.

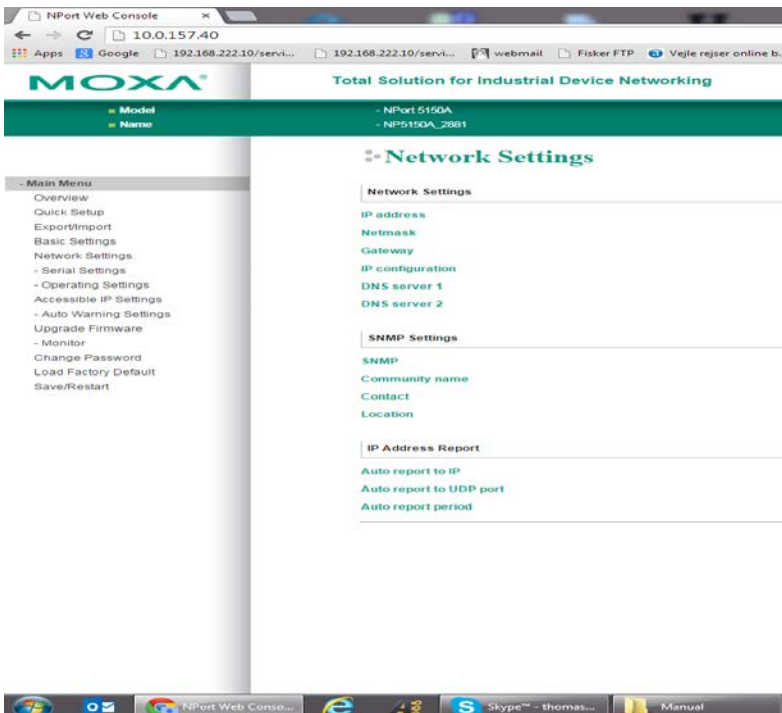
3. After successful installation, open the program "NPort Administrator."



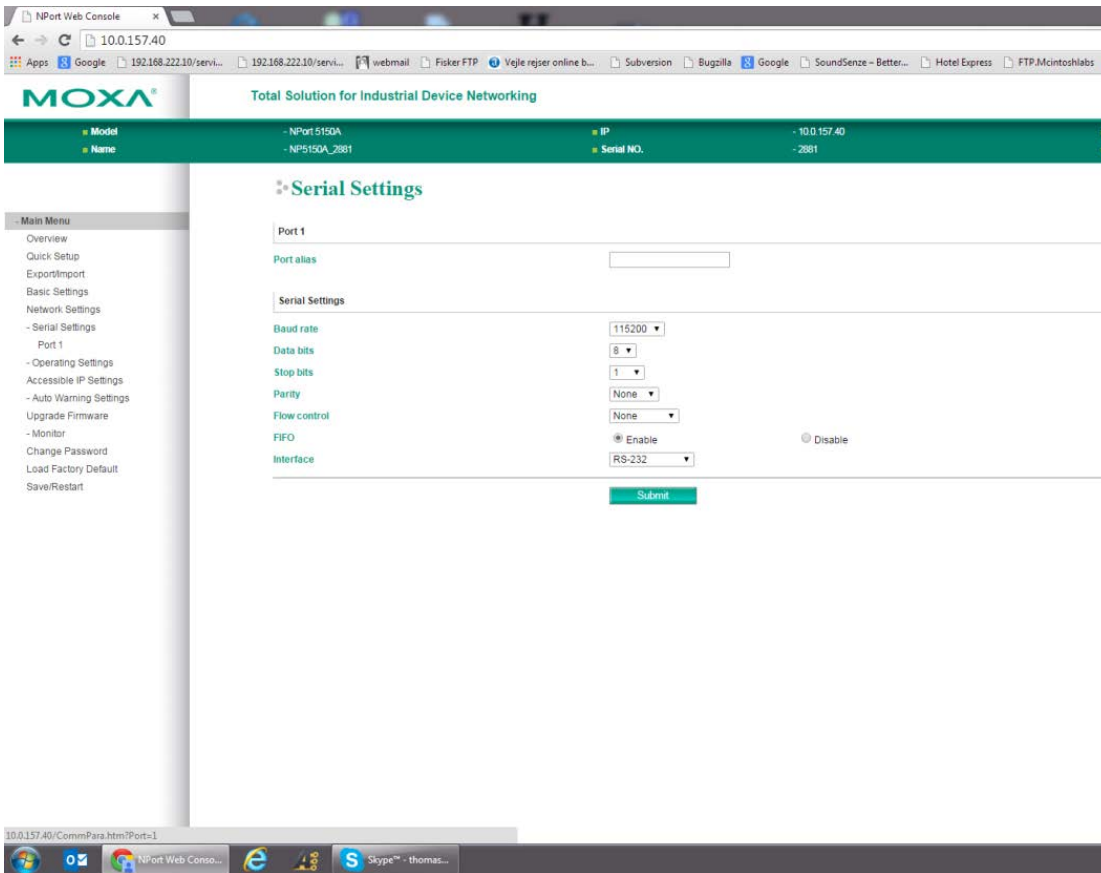
4. Click “Search” and you should find the Moxa device on the network. Mark the device, right-click, and select “Web.” A web browser should now open to enable device setup.



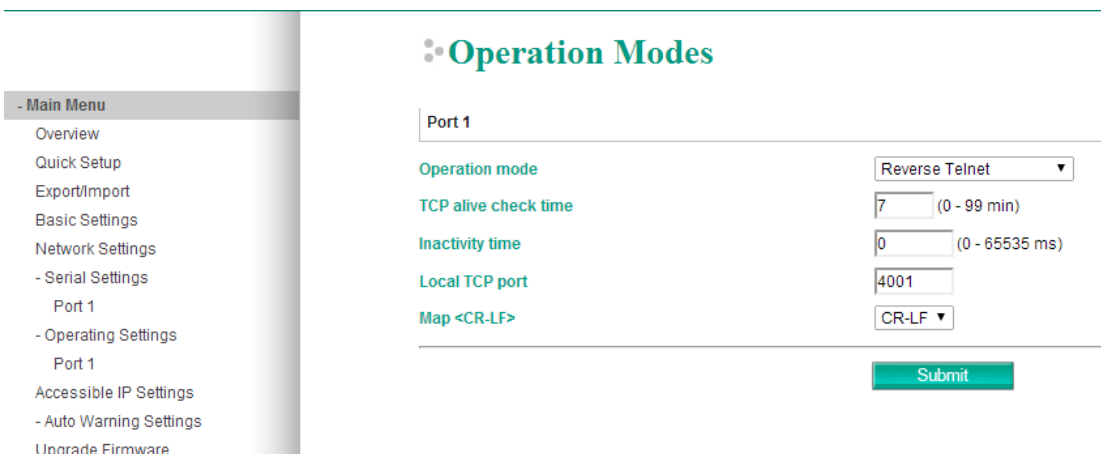
5. Click “Network Settings” and set the static IP to an address that fits your network. Ask your network administrator for available IP addresses. Remember to click “Submit” to save settings, and to record the IP address for later reference.



6. Click on “Serial Settings” to expand the sub-menu and click “Port 1” to set up the serial settings. Set each field according to the picture below. Remember to click “Submit” to save the settings.

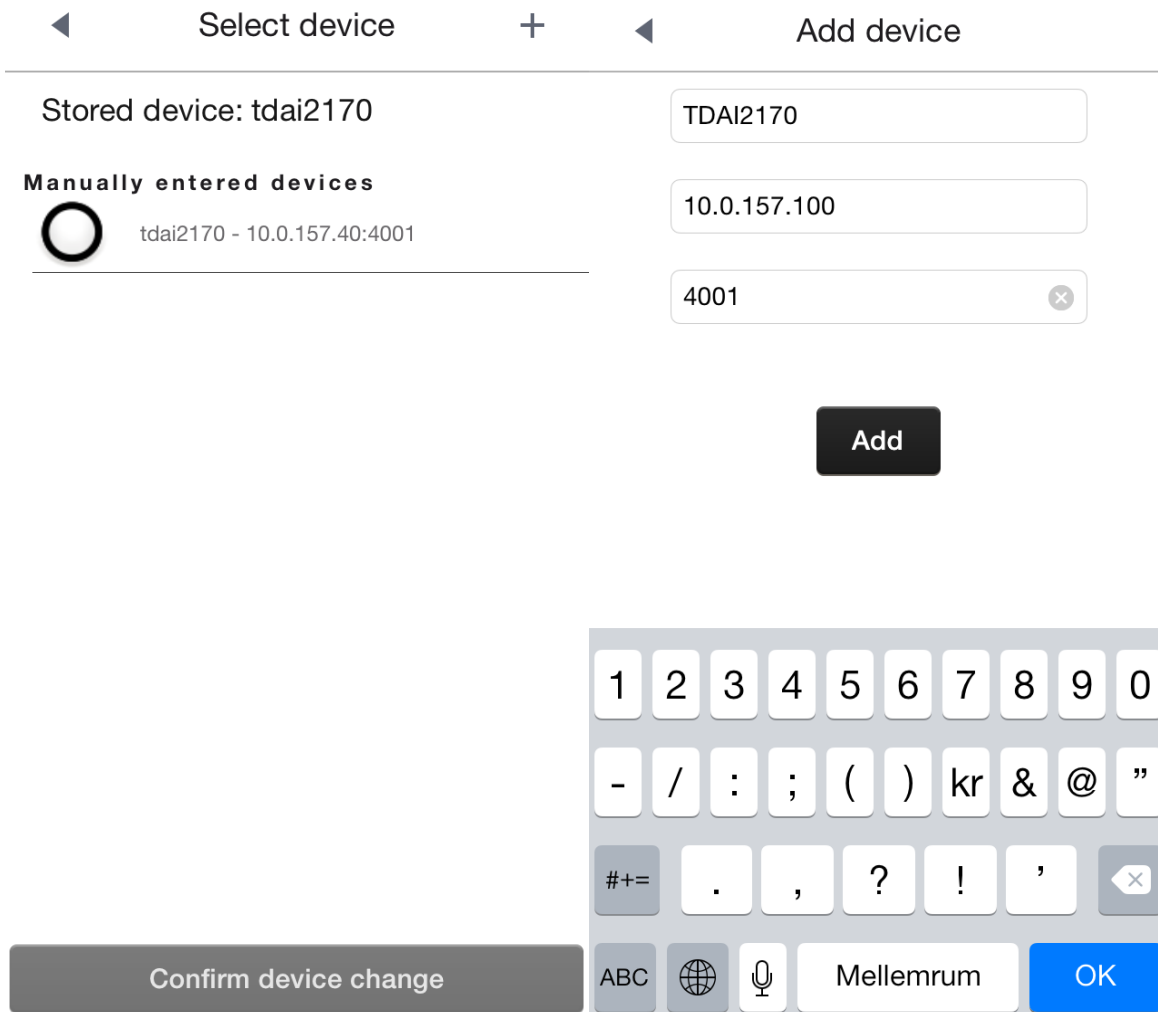


7. Now click “Operating settings” to expand the sub-menu, and then click “Port 1.” Set the Operation Mode to “Reverse Telnet” and click “Submit” to save the settings.

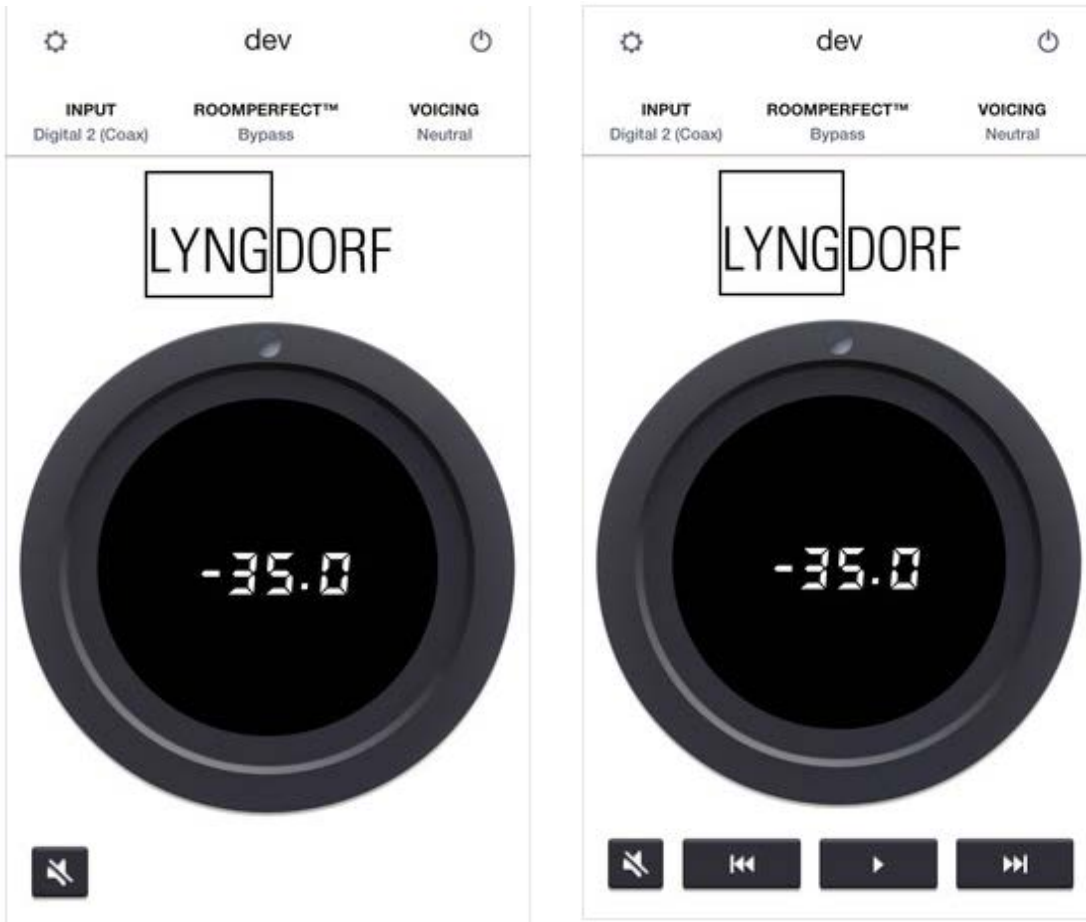


8. Now open the Lyngdorf Remote App on your tablet or smart phone. If you have no Lyngdorf Audio or Steinway Lyngdorf components on the network, you will receive a connection error. At the bottom of the screen, click “Devices.”

9. On the Devices page, click on the “+” sign at the top right-hand side of the screen. You can now manually add devices to your App by typing in the device name, for example, “TDAI-2170.” The Host name is the IP address of your device. The Port Number is the “local TCP port” that was set up in the Moxa device, here 4001. Now click “Add” and connect to the new device.



10. You should now have a connection to the TDAI-2170 through the Moxa port server.



### Complete!

If you also have a Lyngdorf Audio CD-2 that you would like to control via the app, you will need another serial server or a dual RS232 output version, for example, the Moxa NPort W2250A. The second serial server must be set up in the same manner, but the port number must be set to 4002 instead. No other setup is needed to support the CD-2. When a CD-2 is connected, Play/Pause and Skip buttons will show up below the wheel.