

User's manual

Lyngdorf Voicing Tool



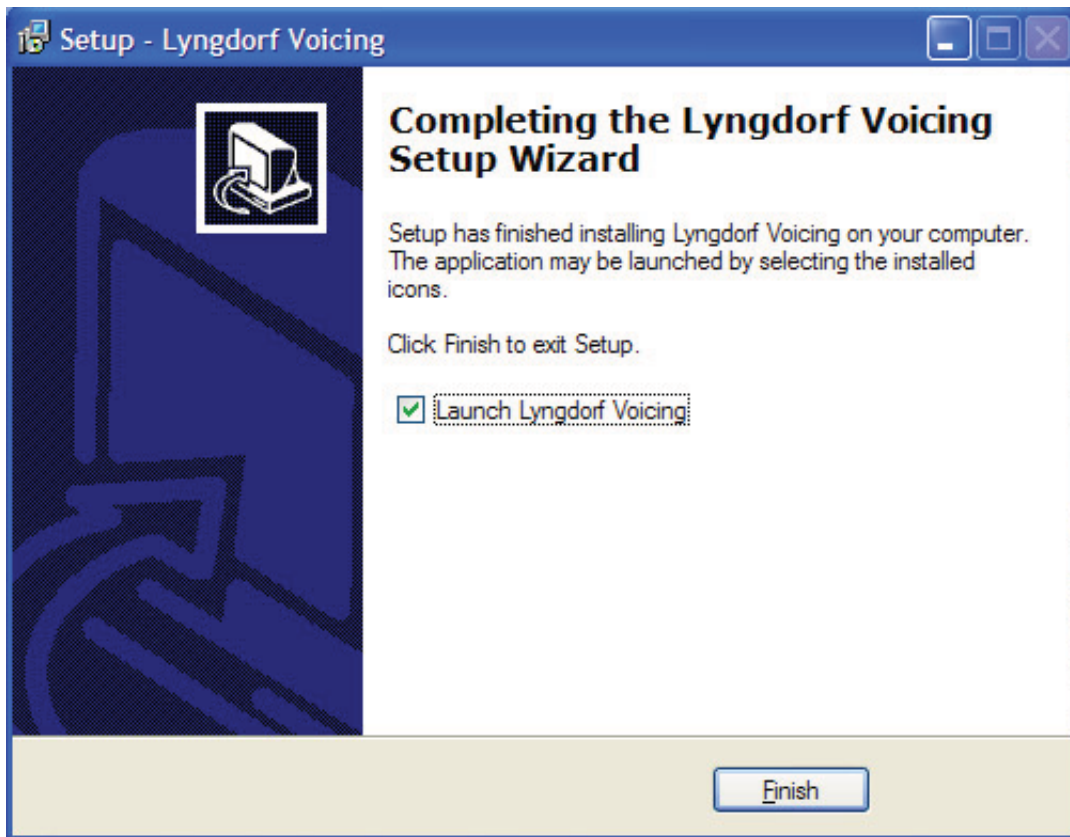
Table of Contents

Installation	3
Starting up	4
Main menu	4
Choosing a new Voicing	5
Updating the Lyngdorf product	6
Feedback	6

Installation

Download the Lyngdorf Voicing Tool and doubleclick to install the program. Please follow the on-screen instructions.

If you have downloaded an updated version of the Voicing Tool we recommend you install it in the old program folder. This will ensure that all voicing files will be installed in the same folder on your pc.



Starting up

1. Turn off your Lyngdorf product.

If your Lyngdorf product is connected to other products via the RS 232 interface, this must be disconnected while working with the Voicing Tool.

If your Lyngdorf product is set as 'Master' you must change this to 'Slave' while working with the Voicing Tool.

2. Connect the serial COM port on your PC to the RS 232 Input on the rear of your Lyngdorf product, using the Serial-RJ 11 Lyngdorf programming cable that came enclosed with your Lyngdorf product.

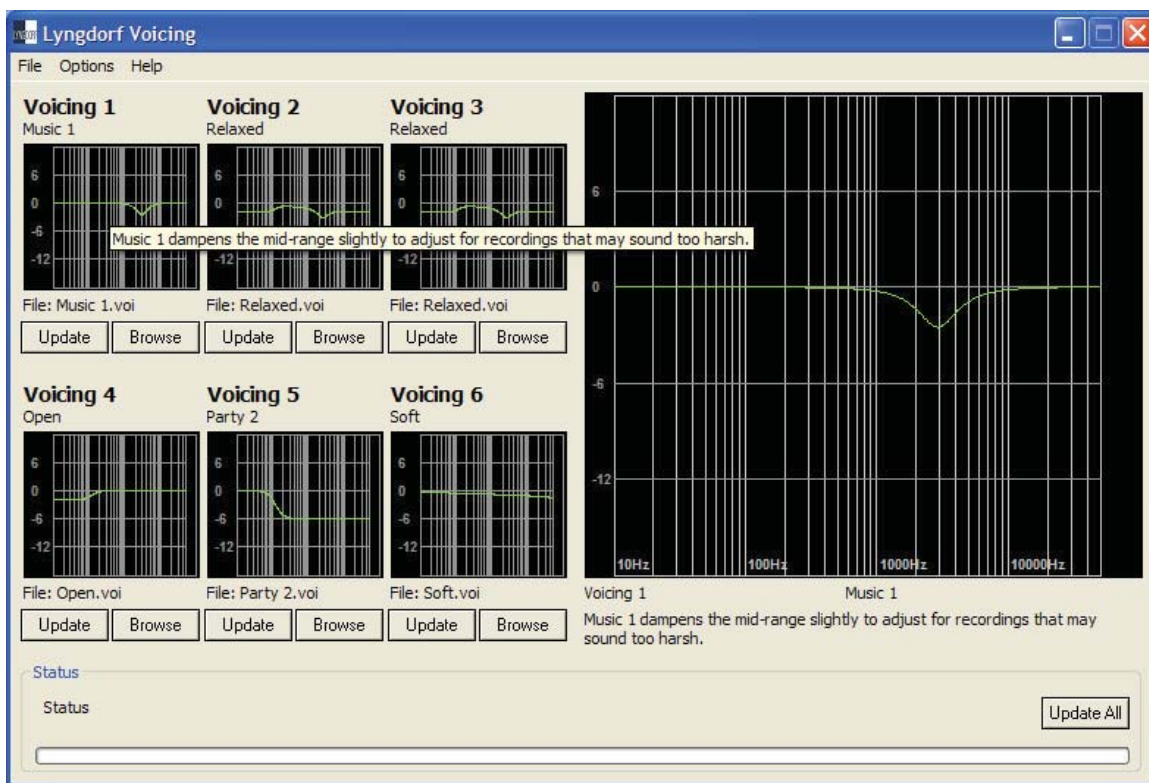
If your PC only features USB ports (no serial port), you will need a USB-Serial adaptor. We recommend using a good quality adaptor like e.g. a Keyspan USA-19HS. Remember to install the appropriate driver for your USB-Serial adaptor before connecting to your Lyngdorf product.

3. Turn On your Lyngdorf product.

Main menu

When starting up the program you get an overview of the voicings that can be uploaded to your Lyngdorf Audio product.

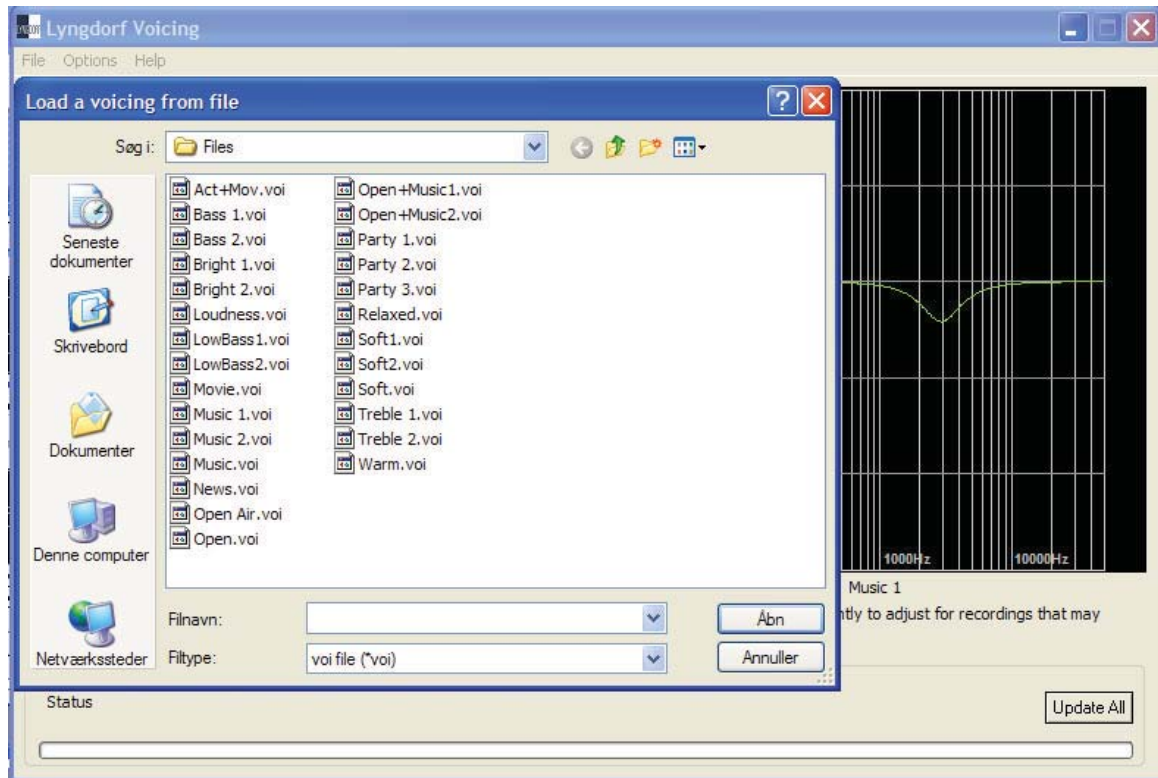
By holding the mouse cursor over one of the six small voicing windows, a description and a larger image will be displayed on the right-hand side of the program window.



Choosing a new Voicing

Click the Browse button below the Voicing you would like to replace. This will open a window where all the Lyngdorf voicings are placed.

Double-click on a Voicing file to load it.



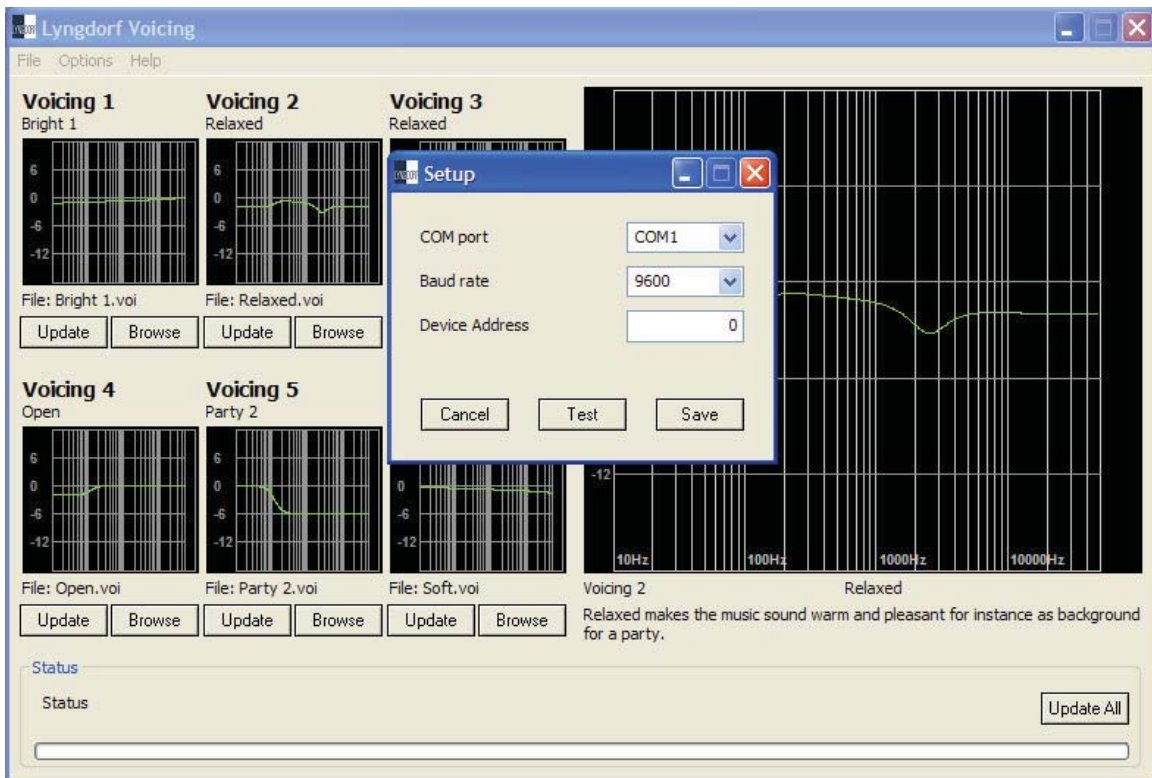
Updating the Lyngdorf product

When you have chosen one or more new voicings you need to update your Lyngdorf product.

Connect your PC to the Lyngdorf product with the programming cable. Check that the "COM port" in the Option tab is the one used by the programming cable on your pc. "Baud rate" (typically 57.600 in a Lyngdorf Audio product) and "Device Address" must match the settings in you Lyngdorf product.

Test the setting by clicking the 'Test' button. Once you are connected you can save the setting to make connection easier next time

Press either the Update or Update All button. When the update is done the message 'Updated with success' is displayed.



Feedback

We hope you will find the new voicings useful. Should you have feedback on voicings that we could include in a future update please contact us at sales@lyngdorf.com.



www.lyngdorf.com